



User Manual

The essentials of Imaging

www.minolta.com

PageScope Light for Pi8500Pro

Welcome

PageScope Light is a device control utility program provided by the HTTP server built into the Pi8500Pro (printer controller for Di850). With a standard Web browser, this utility can be used as a tool for remote control of the Di850.

Trademark Acknowledgements

Minolta is a registered trademark of MINOLTA CO., LTD.

PageScope Light is a trademark of MINOLTA CO., LTD.

Apple and Macintosh are registered trademarks of Apple Computer, Inc.

Ethernet is a registered trademark of Xerox Corporation.

Fiery and the Fiery logo are registered trademarks of Electronics for Imaging, Inc. Fiery WebTools is a trademark of Electronics for Imaging, Inc.

Linux is a registered trademark of Linus Torvalds.

Windows and Windows NT are either registered trademarks or trademarks of Microsoft Corporation in the United States and/or other countries.

Netscape Communications, the Netscape Communications logo, Netscape Navigator, Netscape Communicator, and Netscape are trademarks of Netscape Communications Corporation.

PCL is a registered trademark of Hewlett-Packard Company Limited.

PostScript is a registered trademark of Adobe Systems, Inc.

Solaris is a trademark of Sun Microsystems, Inc.

All other product names are trademarks or registered trademarks of their respective holders.

Copyright 2002 MINOLTA CO., LTD.

Screen images shown in this manual may differ slightly from actual ones. In addition, the explanations are given by using Internet Explorer as the Web browser.

Specifications are subject to change without prior notice.

CONTENTS

1 *System Requirements* 1

2 *Access* 1

 2.1 Operation2

 2.2 Entering the Password2

3 *Screen Configuration* 3

4 *Description of Each Page* 4

 4.1 System Tab4

 4.2 Printer Tab6

1 System Requirements

The following items are required to use this utility.

Computer

- Software

Operation System	Web Browser
Windows 98/Me/NT 4.0/2000/XP	Internet Explorer 5.0 or higher Netscape Communicator 4.71 only
Macintosh System 8.6 or 9.x	Internet Explorer 5.0 or higher
Solaris 2.5.1/2.6, Solaris 7 (2.7)	Netscape Navigator 4 or higher
Linux	Netscape Navigator 4 or higher

Digital Copier

- The printer controller Pi8500Pro

Network

- Ethernet 10/100 BaseT
- TCP/IP Protocol

2 Access

PageScope Light can be accessed directly from a Web browser.

1. Start the Web browser.
2. In the Address Bar, enter the IP address of the printer controller as shown below.

`http:// <IP address of printer controller>/`

2 Access

(Example) When the IP address of the printer controller is 192.9.200.200:

`http://192.9.200.200/`

3. This causes PageScope Light screen to appear.

2.1 Operation

PageScope Light operation is identical to that for Internet Web pages. Clicking a hot link jumps to the link destination, and the **Back** and **Forward** buttons scroll through pages backwards and forward.

If an error message appears due to an incorrect setting, click the **Back** button to return to the previous page, and then try specifying the setting again.

In addition, if the Minolta PageScope Light logo in the top-left corner of the page is clicked, the Minolta Web site opens up in the browser.

2.2 Entering the Password

The Password input box appears in the page where PageScope Light settings can be changed.

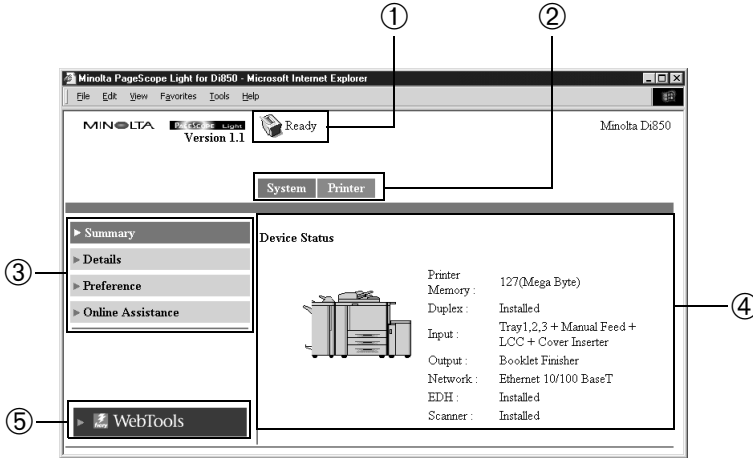
Type in the password here when a password is defined. Note that the password is case-sensitive, so be sure to type in upper-case and lower-case characters correctly. (The password you should type in here is the same as the administrator password you created with Fiery WebTools.)

An admin's password for WebTools is required to change these settings.

Password

3 Screen Configuration

The configuration of the PageScope Light screen is shown below.



① Status display section

The status of the system is shown with icons and text.

Ready	Attention	Error	Trouble

② Tabs

The categories that can be controlled by PageScope Light are displayed.

- **System** Used to control and set the system structure for the Digital Copier
- **Printer** Used for setting the printer controller

③ Menus

The information and settings for the selected tab are displayed.

4 Description of Each Page

④ Information and setting details

The details of the selected menu are displayed.

⑤ Fiery WebTools Logo

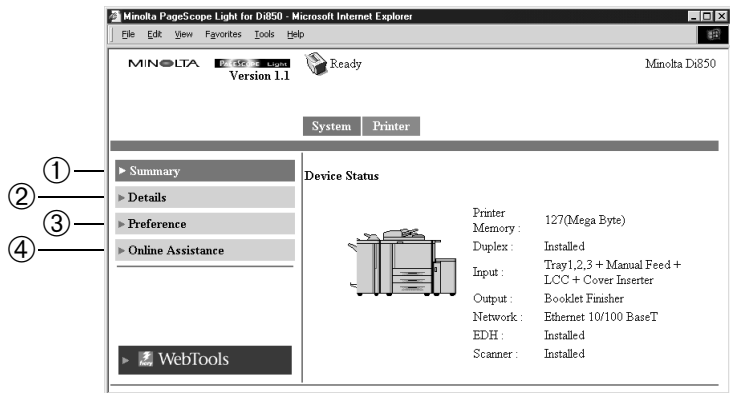
Clicking this logo displays the settings page for Fiery WebTools, which is built into the printer controller. For details about Fiery WebTools, see the Fiery Printing Guide.

4 Description of Each Page

This section contains descriptions of the information and settings that are displayed when each tab is clicked.

4.1 System Tab

On the **System** tab, information concerning the system structure for the Digital Copier can be checked and set. Checking and setting can be performed with the ① **Summary**, ② **Details**, ③ **Preference**, and ④ **Online Assistance** menus.



① Summary

A summary of the status and the system structure of the Digital Copier is displayed.

② Details

The details of the status and the system structure of the Digital Copier are displayed.

- **Input Tray** It shows the current status of all the Input Trays installed on the Digital Copier.
- **Output Tray** It shows the current status of all the Output Trays installed on the Digital Copier.
- **Hard Disk** It shows the status of the hard disk installed on the printer controller.
- **ROM Version**
It shows version of firmware installed on the Digital Copier and printer controller.
- **Interface Info**
It shows information about network interface and local interface.
- **Consumable** It shows the current status of Digital Copier consumables.

③ Preference

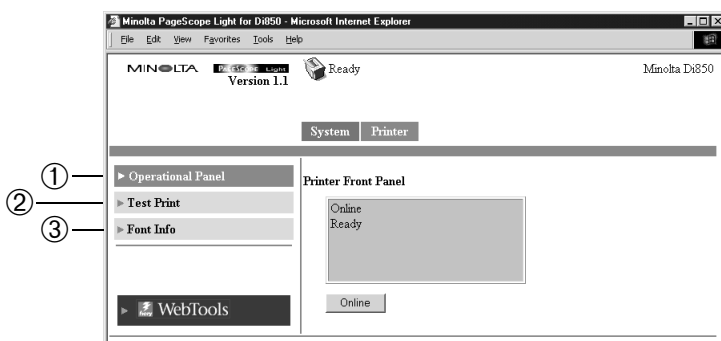
The environment settings such as the refresh rate time and the system language can be specified.

④ Online Assistance

Enter information concerning product support and check it when necessary.

4.2 Printer Tab

Use the **Printer** tab for configuring the printer controller settings. Checking and setting can be performed with the ① **Operational Panel**, ② **Test Print**, and ③ **Font Information** menus.



① **Operational Panel**

It provides on-screen emulation of the printer controller's operational panel.

② **Test Print**

It lets you select test print pages and execute a test print operation.

③ **Font Info**

It shows a list of fonts for each applicable printer control code.

- **PCL Font** It shows a list of PCL fonts built into the printer controller.

- **PostScript Font**

It shows a list of PostScript fonts built into the printer controller.



**Copyright
2002 MINOLTA CO., LTD.**

The information contained in this manual
is subject to change without notice to
incorporate improvements made on the
product or products the manual covers.